

AN ORDINANCE APPROVING AN E.S.D.A. PLAN

BE IT ORDAINED BY THE PRESIDENT AND BOARD OF TRUSTEES OF THE VILLAGE OF CHATHAM, ILLINOIS, AS FOLLOWS:

SECTION 1. The Village of Chatham Comprehensive Emergency Management Plan drafted by the Village of Chatham Emergency Services and Disaster Agency, a copy of which is attached hereto as Exhibit A, is hereby approved.

SECTION 2. The appropriate officers of the Village of Chatham are authorized and directed to carry out the Village of Chatham Comprehensive Emergency Management Plan according to its terms.

SECTION 3. The Director of the Village of Chatham E.S.D.A. is directed to provide a copy of this Ordinance and the Comprehensive Emergency Management Plan to the Sangamon County E.S.D.A.

Passed this 23<sup>RD</sup> day of October, 1990.

Carl Oblinger  
CARL OBLINGER, VILLAGE PRESIDENT

ATTEST:

Rose Miller  
Village Clerk

AYES: 4  
NAYS: 0

PASSED 10/23/90  
APPROVED: 10/23/90

AN ORDINANCE APPROVING AN E.S.D.A. PLAN

BE IT ORDAINED BY THE PRESIDENT AND BOARD OF TRUSTEES OF THE VILLAGE OF CHATHAM, ILLINOIS, AS FOLLOWS:

SECTION 1. The Village of Chatham Comprehensive Emergency Management Plan drafted by the Village of Chatham Emergency Services and Disaster Agency, a copy of which is attached hereto as Exhibit A, is hereby approved.

SECTION 2. The appropriate officers of the Village of Chatham are authorized and directed to carry out the Village of Chatham Comprehensive Emergency Management Plan according to its terms.

SECTION 3. The Director of the Village of Chatham E.S.D.A. is directed to provide a copy of this Ordinance and the Comprehensive Emergency Management Plan to the Sangamon County E.S.D.A.

Passed this \_\_\_\_\_ day of July, 1990.

\_\_\_\_\_  
CARL OBLINGER, VILLAGE PRESIDENT

ATTEST:

\_\_\_\_\_  
Village Clerk

AYES: \_\_\_\_\_  
NAYS: \_\_\_\_\_

PASSED \_\_\_\_\_  
APPROVED: \_\_\_\_\_

AN ORDINANCE APPROVING AN E.S.D.A. PLAN

BE IT ORDAINED BY THE PRESIDENT AND BOARD OF TRUSTEES OF THE VILLAGE OF CHATHAM, ILLINOIS, AS FOLLOWS:

SECTION 1. The Village of Chatham Comprehensive Emergency Management Plan drafted by the Village of Chatham Emergency Services and Disaster Agency, a copy of which is attached hereto as Exhibit A, is hereby approved.

SECTION 2. The appropriate officers of the Village of Chatham are authorized and directed to carry out the Village of Chatham Comprehensive Emergency Management Plan according to its terms.

SECTION 3. The Director of the Village of Chatham E.S.D.A. is directed to provide a copy of this Ordinance and the Comprehensive Emergency Management Plan to the Sangamon County E.S.D.A.

Passed this \_\_\_\_\_ day of July, 1990.

\_\_\_\_\_  
CARL OBLINGER, VILLAGE PRESIDENT

ATTEST:

\_\_\_\_\_  
Village Clerk

AYES: \_\_\_\_\_  
NAYS: \_\_\_\_\_

PASSED \_\_\_\_\_  
APPROVED: \_\_\_\_\_

EXHIBIT A

VILLAGE OF CHATHAM

1990

COMPREHENSIVE EMERGENCY PLAN

REVISIONS REQUESTED BY ILLINOIS ESDA:

Page 3 - 5th paragraph - 3rd sentence: "Specific information on the disaster and the impact will be promptly reported to the Illinois Emergency Service and Disaster Agency through the Springfield-Sangamon County ESDA."

Page 1-1 - 3rd Subtitle (Hazardous Material Storage): Second sentence which would say, "but we do need to take into consideration the storage of seasonal farm chemicals, fuels, pool chemicals which we would have in our community."

Page 5-1 - 2nd Subtitle (Assumption): Add a 4th sentence, "The Incident Commander shall be the Fire Chief or his designee."

Page 7-2 - Under C: "Asterisk shall identify the agencies listed that are directed to be notified by Springfield-Sangamon County ESDA."

TABLE OF CONTENTS

1-1	HAZARD ANALYSIS
2-1	MASS CASUALTY INCIDENT CHART AND JOB DEFINITION
3-1	EMERGENCY RESPONSE CHECKLIST
4-1	LAW ENFORCEMENT
5-1	FIRE
6-1	SEARCH AND RESCUE
7-1	SHELTER
8-1	PUBLIC INFORMATION OFFICER
9-1	VILLAGE RESOURCE LIST
10-1	TRANSPORTATION RESOURCES
11-1	STATE, FEDERAL, COUNTY, SUPPORT AGENCIES
12-1	MANPOWER
13-1	WEATHER WATCH PLAN
14-1	MASTER PHONE LIST

ESDA Coordinator - Monte Sims  
ESDA Deputy Coordinator Paul Beadle

ESDA Mobility TEAM  
Logan Patton  
Steven Sims  
Roger Furkin  
Jim Keith  
Darrill Sims

VILLAGE OF CHATHAM

COMPREHENSIVE EMERGENCY MANAGEMENT PLAN

*Approved by the Village Resource List*

I. PURPOSE:

The purpose of this plan is to develop a comprehensive emergency management program which seeks to mitigate the effect of a hazard, to prepare for measures to be taken which will preserve life and minimize damage, to respond during emergencies by providing necessary assistance, and to establish a recovery system in order to return the community to its normal state of affairs.

This plan attempts to define in a straightforward manner who does what, when, where, and how, in order to mitigate, prepare for, respond to, and recover from the effects of any natural disaster, technological accident, or other major incidents.

II. DEFINITIONS/ABBREVIATIONS

- 1. CAP-COM 911 Radio Operations Center
- 2. EMS Emergency Medical Service
- 3. EOC Emergency Operations Center
- 4. ESDA Emergency Service and Disaster
- 5. PIO Public Information Officer

III. SITUATION AND ASSUMPTION

The Village of Chatham has been and will continue to be exposed to many hazards, all of which have the potential to threaten the health, safety and welfare of the citizens of the community. These hazards are classified as natural, technological, and nuclear risks and have the potential to cause injuries, deaths, property damage, and major disruptions to the community.

*Some Hazardous as County  
County State Plan as guidelines  
Some Hazardous Emergency  
Shelton Hazardous Emergency*

Natural hazards would include tornadoes, earthquakes, violent storms, extreme temperatures, land subsidence, flood, etc.

Technological hazards would include hazardous material accidents, conflagrations, transportations accidents, structural collapse and explosions.

There is also the threat of a war related incident such as a nuclear, biological or conventional attack upon the United States.

A detailed explanation of the types of hazards that could occur and have a impact upon the Village of Chatham is located in the hazard/vulnerability section of this plan.

#### B) Assumptions

1. The Village of Chatham will continue to be exposed to the hazards noted above as well as others which may develop in the future.
2. The public officials within the Village of Chatham recognize their responsibilities with regards to the health, safety and welfare of the citizens of the community.
3. Each public official will assume their responsibility in the implementation of any section or part of this emergency management plan.
4. If properly implemented, this plan will reduce or prevent disaster losses.

#### IV. CONCEPT OF OPERATIONS

##### A) General

Mitigation, preparedness, response and recovery is the responsibility of each agency and organization identified within the agency responsibility matrix. This plan is written under the assumption that the basic plan and annexes provide the legal authority and basis for preparing hazard specific contingency plans for natural and technological disasters and the threat of nuclear attack. Each hazard contingency plan will be developed after the thorough vulnerability analysis has been conducted for the Village of Chatham.



The hazard contingency plans will provide emergency procedures aimed at responding to and recovering from each disaster situation.

It is a basic concept that emergency operations will make use of all available resources to combat the effect of a disaster. Since the normal functions and organizations of local government will be the primary resource around which all disaster operations develop, appropriate emergency functions are assigned to the various agencies and departments of the Village of Chatham in line with the normal day to day responsibilities. Non-essential functions performed by these agencies and departments will be suspended once a contingency plan is implemented.

The Mayor of the Village of Chatham is responsible for the overall command of any disaster situation within the village. The Emergency Service Coordinator responsibility is to coordinate and direct all emergency operations and to keep the Chatham Village Board apprised of the current status.

Authority for the implementation of any section or part contained within this plan will be determined by:

1. Mayor
2. Village Council
3. ESDA Coordinator
4. Appropriate Department Head  
(Fire Chief, Police, etc.)

Upon implementation of this plan, all assigned individuals will be advised to assemble at the Chatham Village Hall. Pre-assigned emergency operating procedures will be followed by each dept. in order to institute an orderly and phase in emergency response base upon pre-emergency and post-emergency sequences.

The Emergency Service Coordinator will function as the liaison between the county, city and the state Emergency Services and Disaster Agency in request for disaster assistance. The Coordinator will follow the proper notification procedures in seeking county and state assistance. Specific information on the disaster and the impact will be promptly reported to the Illinois Emergency Service and Disaster Agency. *Thru the Spfld/Sang. CO. ESDA.*  
Illinois ESDA is responsible for the coordination of state resources and federal disaster assistance.

## V. ORGANIZATION AND ASSIGNMENT OF RESPONSIBILITIES

### A) General

Most of the departments within local government have emergency functions in addition to their normal duties. Each department is responsible for developing and maintaining their own emergency management procedures.

Should local government resources prove to be inadequate during emergency operation, request will be made for assistance from other local jurisdictions, higher levels of government, and other agencies in accordance with existing or emergency negotiated mutual-aid agreements and understandings. Such assistance may take the form of equipment, supplies, personnel or other available capabilities. All agreements and understanding will be entered into by duly authorized officials and be formalized in writing whenever possible.

## HAZARD ANALYSIS

### INTRODUCTION

We hope this document will attempt to describe the hazards in our Village. Once a hazard is reconized, there are ways of which they can be prevented, reduced or controlled. Ahazard is only considered a possibility and not a hazard until it actually materializes. To qualify for a hazard, it must:

1. Causes a long-term disruption of on-going social processes affecting relatively large numbers of people, and
2. Cannot be effectively handled by the govermental unit affected.

Proper planning can serve to reduce the vulnerability, and with a functioning disaster response plan, you can mitigate the effects both before, during and after a disaster.

### TORNADOES

The technical definition of tornado is that it is a local atmospheric storm of short duration composed of winds rotating at very high speeds, usually moving in a counter clock-wise direction. It is visible as a vortex, a whirlpool-like column of winds rotating around a hollow cavity in which its centrifugal forces have produced a partial vacuum. To anyone who has seen a tornado, it can simply be described as a menacing dark funnel.

The odds against tornadoes in Illinois aren't the best. They seem to prefer striking nearby. The state is located on the northeast edge of "tornado alley". Illinois' average of 25 tornadoes each year ranks the state among the top in the nation in tornado frequency.

Tornadoes strike more frequently in some areas than others: Sangamon County is one of the areas they hit frequently. We have had numerous tornadoes between 1950 and 1989 and still remains a high frequency tornado area.

### HAZARDOUS MATERIAL STORAGE

There is very little of large volume storage or manufacturing of hazardous material in Chatham and a list will be complete in the future. But we do need to TAKE into consideration the storage of Seasonal Farm Chemicals, Fuels, ~~Pool~~ Pool Chemicals which we would have in our community.

## TRANSPORTATION OF HAZARDOUS MATERIAL

There are many types of transportation which enter through the Chatham area. One of these is the state highway system. We also have a high rate of farm chemicals transported, mostly being potash and anhydrous ammonia as Chatham is surrounded by a large farming community.

Railroads are another source of transportation that carry hazardous material run through our village.

An act was passed by the Illinois General Assembly in 1976 requires the labeling of equipment and facilities for the use, transportation, storage and manufacture of hazardous materials and to provide for a uniform response system to hazardous materials emergencies.

The problem of hazardous materials has not been solved but the reduction and help in preventing of a hazardous materials emergency has been engaged.

### Pipelines

No state can manage without natural gas, crude oil, and refined petroleum products. Liquids transported through pipelines fall into three categories:

1. highly volatile liquids
2. refined products
3. crude oils

Natural gas a highly volatile gas, and very common in a community such as Chatham could present a potential problem. Due to the extensive nature of pipeline networks, the village should focus its attention on ensuring that we have a adequate disaster response plan to meet such an emergency should one occur.

### Pollution

Air, water, and land pollution would be considered a possibility in this area. It is impossible to eliminate all of the pollutants which might effect a particular area, but a community might help by a disaster plan for each pollutant that might present a problem.

By knowing particular and most pollutants, extra precautions can be taken in a day to day life.

Runoff from various chemicals used at distribution centers could cause a problem to area wells still in use by many farms and small towns. These chemicals range from several gallons to several tons stored at one particular time. The runoff from the chemical used on the fields themselves may possibly work its way in nearby lakes and streams which may be used as a water source.

#### NUCLEAR HAZARD

Illinois is highly dependent on nuclear power plants for electrical energy and may probably become even more dependent on it. The study conducted by the nuclear regulatory commission of the United States have indicated that the immediate health hazards of a gaseous release would be confined to within a ten mile radius of the nuclear power plant releasing the gases. Chatham is approximately seventy miles away from the nearest nuclear power plant which is located in Clinton, Illinois. This would take our Village out of the vulnerability of a possible nuclear hazard from a nuclear plant.

Some transportation of nuclear materials through Chatham is possible and I am sure does happen. No known accidents of this material has been recorded at present. This does not alleviate the possibility of an occurrence of any nuclear hazardous materials incident.

#### SEVERE WINTER STORMS

Severe winter storms normally occur five times a year in CHATHAM producing more damage than any other form of severe weather including tornadoes and severe thunderstorms.

Chatham has been experiencing gradually worsening winters over the past several years, being the worst recently, the ice storm that struck our county and several surrounding counties in March of 1978. Several counties in Illinois were declared an Emergency area. Heavy snowfall combined with strong winds which created severe drifting and visibility problems, as well as electric power and water system failures. Many people were seeking cover in city shelters.

A winter storm is considered to be severe when it can be described by one or more of the following:

1. It is a snow storm which has produced six inches or more of snow at any one given point within a forty-eight hour period.

2. It is a snow storm which has produced conditions leading to property damages, deaths or injuries regardless of the amount of snowfall.
3. It is a glazed storm in which ten percent of the cooperative United States Weather Bureau Substation in Illinois have reported glaze.
4. It is a glaze storm in which property damages, deaths, or injuries occurred.

#### EARTHQUAKES

Sangamon County is considered in a low vulnerability area of earthquake activity. Chatham, although, has experienced several "tremors" resulting from the New Madrid Fault Zone, which runs from Cairo, Illinois to Memphis, Tennessee.

All counties lying along or near seismic fault lines in Illinois include in their disaster response plans a section on earthquake preparedness showing existence of coal mines in which Chatham appears. Also, provisions for extra storage of water for firefighting and domestic use in the least vulnerable area of the Chatham should be noted.

#### MILITARY ACTION

Despite the many efforts to achieve and maintain peace, a possibility of a nuclear attack upon the United States remains a possibility. If such an event should occur, the effects would be devastating. Sangamon County would be considered as a risk area under a nuclear attack on the United States. Sangamon County is a more vulnerable target due to its state and local government offices.

Sangamon County would be more directly affected by the actual direct weapons effect and possible radioactive fallout. Some applications for shelter have been established if any one event should occur.

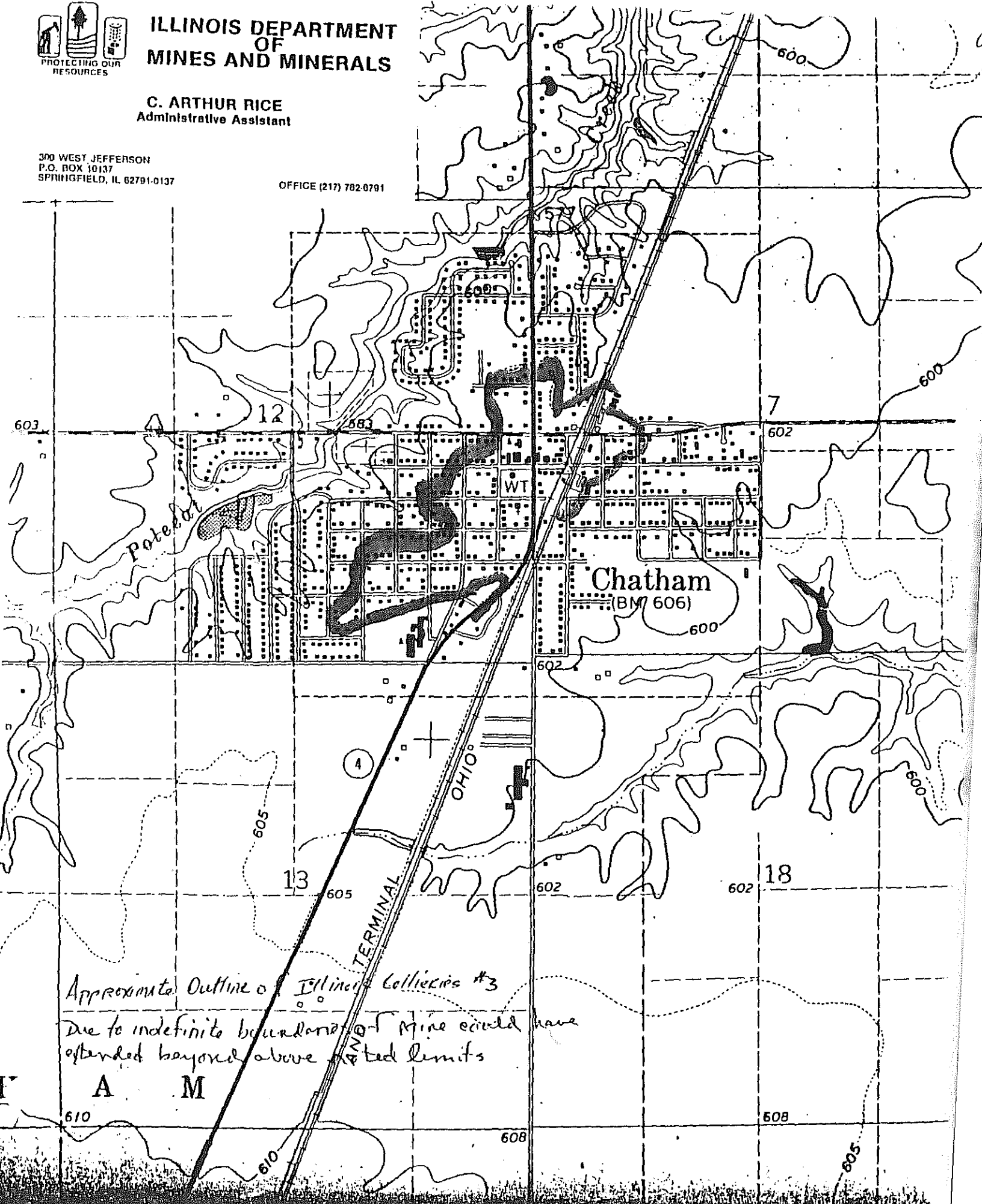


ILLINOIS DEPARTMENT  
OF  
MINES AND MINERALS

C. ARTHUR RICE  
Administrative Assistant

300 WEST JEFFERSON  
P.O. BOX 10137  
SPRINGFIELD, IL 62791-0137

OFFICE (217) 782-8791



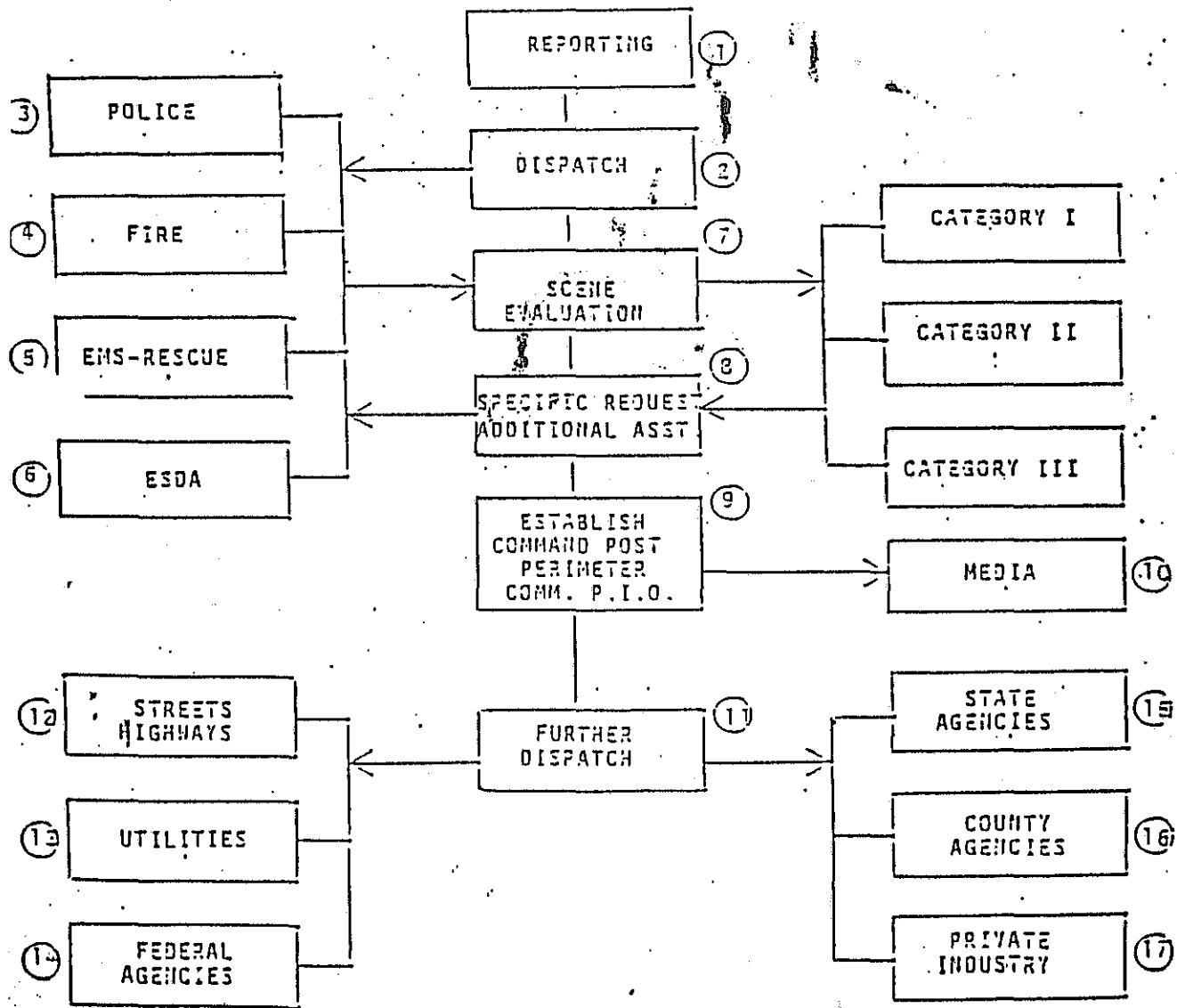
Approximate Outline of Illinois Collicies #3

Due to indefinite boundaries of Mine could have  
extended beyond above stated limits

A M

MASS CASUALTY INCIDENT CHART

MASS CASUALTY  
INCIDENT CHART





INCIDENT CHART JOB DEFINITION

1. REPORTING

To give the account of the incident and location to CAP-COM 911, (DISPATCH).

2. DISPATCH

CAP-COM 911 is the Sangamon County communications center and will be the primary communication center for Chatham. Their first contacts thru the communication network will be Chatham Fire, EMS-Rescue, Police, ESDA, and further contacts for resouces will be made as directed.

3. Chatham Emergency Response

The first responder, Chatham Police, Fire, ESDA,.

4. SCENE EVALUATION

The first responder shall appraise the emergency scene by determining injuries and non-ambulatory victims and categorizing.

LEVEL I - 10 to 20 victims

LEVEL II - 20 to 30 victims

LEVEL III - over 30

5. SPECIFIC REQUEST FOR ADDITIONAL ASST.

After the scene has been evaluated that is the time to determine if additional asst. will be needed in order to lesson the affect of the emergency.

6. ESTABLISH COMMAND POST, PERIMETER, COMM

The following personnel, listed by title, will report to the Incident Command Post immediately upon being alerted that an incident has occurred, and command facilities are being activated:

- a. FIRE INCIDENT COMMANDER
- b. POLICE INCIDENT COMMANDER
- c. ESDA COORDINATOR

## EMERGENCY RESPONSE CHECKLIST

1. Upon receiving warning information of a major emergency or disaster, sound the appropriate warning system(s) and initiate call list of key officials.

MAYOR  
\*VILLAGE ADMINISTRATOR  
\*ESDA DIRECTOR  
\*ESDA DEPUTY DIRECTOR  
\*EMPLOYEE SUPERINTENDENT  
\*POLICE CHIEF  
\*FIRE CHIEF

\*People that could be notified thru County dispatch or CAP-COM 911 radio operation center.

2. Implement staff call-up list to ensure adequate manpower.

VILLAGE EMPLOYEES  
TRANSPORTATION OFFICER  
SHELTER PERSONNEL (RED CROSS, SALVATION ARMY)  
VILLAGE TRUSTEES

3. Implement supplemental manpower call list as directed, this call list will include township, County, state and Federal people which will be on the Master Call List as mentioned.
4. Activate Sangamon County Mobil Emergency Operation Center as directed.

## RECOVERY OPERATION CHECKLIST

1. Provide volunteers to assist in operations of "Disaster Assistance Centers" following a Presidential Disaster Declaration.
2. Coordinate with Public Information Officer concerning the locations of Disaster Assistance Centers.
3. Coordinate welfare operations to ensure that all residents in need are assisted.

D. COMMAND POST

The Command post is the brain of the operation and is under the control of the Incident Commander. The Command Post should be located on the perimeter of the incident at a safe location. The personnel involved in Command Post operations are there to make decisions required to mitigate the incident and are concerned with the safety of the persons living and working in the surrounding area.

e. PERIMETER

Care should be taken to locate the Command Post on the perimeter, upwind in the case of a hazardous material incident and in an area where it would be moved only in a emergency. The perimeter shall be at a safe and reasonable distance and defined as the outer boundary of the emergency area.

Crowd/Traffic control will be established to expedite vehicle and pedestrian traffic routing to and from the area of the emergency and to other locations necessary.

The defined area/location involved will be contained with a possible inner and outer perimeter. As determined by the emergency, points of ingress/egress for vehicles/pedestrians will be established.

Limited access of authorized personnel within the involve area will be established and maintained by law enforcement officials. No one will be permitted into the Forward Incident Command Post without authorization of the Incident Coordinator or his designee and will be provided with appropriate visual identification.

d. COMMUNICATIONS

Joint communications will be available with the establishment of the forward Incident Command Post, providing direct radio communication through IREACH channel 155.055. Those agencies functioning as a part of the Incident Command Post staff will also have direct access to the 911 center radio link.

The Mobile Command Post (ESDA 4) if needed will be brought to and set up at the scene by Sangamon County ESDA Rescue Squad Personnel which can be notified thru the Sangamon County Sheriff's Dispatch Operations. This unit is self-contained with its own 6kw generator if commerical power is not available, two roof mounted air conditioners, staff office direct communications for Springfield Police, Sangamon County Sheriff's Office, Springfield Fire Department, ESDA, C.B. and telephone capabilities.

The 911 Center will monitor communication transmissions and assist in maintaining communications discipline, as required.

Incident Command Center may designate other frequencies as needed.

## LAW ENFORCEMENT

### STATEMENT OF PURPOSE

Maintaining law and order and providing for the protection of life and property through enforcement of statues and ordinances are functions of the Chatham Police Department. During times of major emergencies or disasters increased activities of traffic and crowd control, security and preservation of looting, protection of vital facilities, etc. will greatly increase the demand for law enforcement.

The purpose of this annex is to identify the agencies involved in providing law enforcement services and to define their respective roles.

### SITUATIONS AND ASSUMPTIONS

#### SITUATIONS

Chatham has an estimated population of \_\_\_\_\_. The work force represents a typical cross section of the Central United States including but not limited to farming, and industries that use or produce products that incorporate the use of hazardous materials.

Following a disaster or emergency impact, a perimeter around the impact area will be assigned to the Chatham Police Department or the Sheriffs office whoever has jurisdiction. Depending on the size of the disaster or emergency, additional resources may be needed.

Preservation of evidence at the disaster or emergency scene as well as protection of the deceased will be undertaken by the Chatham Police Department or authorized Police Agency designated in charge of the area.

#### ASSUMPTIONS

Due to its location Chatham has a vast amount of mutual aid law enforcement resources from surrounding communities, State and Federal Agencies. Certain individuals in the county could provide, if properly trained, additional manpower in the form of security forces to assist in traffic and crowd control.

#### CONCEPT OF OPERATIONS

The Chief Executive Officer, The Mayor of Chatham, is responsible for ensuring that disaster response and recovery operations are effective. The Chatham Police Department has been identified as the "Lead Agency" for providing law enforcement services. Responsibilities for law enforcement

services in times of major emergency or disaster are basically the same as in day-to-day operations. However, in addition to normal law enforcement functions, the Chatham Police Department personnel may be asked to perform other tasks and may have to coordinate their operations with other departments or agencies.

Initial Requests from the public for emergency response will be received and dispatched from the Cap Com (911) Dispatch Center. In the event of an evacuation of certain sections of the village (the evacuation annex guideline) will be used.

#### ORGANIZATION AND RESPONSIBILITIES

The responsibility for providing law enforcement services within Chatham rests with the Mayor of Chatham, the Chatham Police Chief. The Mayor of Chatham, the Chatham Police Chief or Chatham Police Sergeants shall be responsible for overall operations of the Chatham Police Department. The Sangamon County Sheriff or Administrative Assistant or Chief Deputy shall assume operations if circumstances dictate.

#### DIRECTION AND CONTROL

The Command Center shall be the direction and control point for all major decisions concerning law enforcement operations. Security for the Command Center will be Chatham Police or an authorized designee. Field operations shall be coordinated by the senior officer, through the command post functioning at or near the disaster site.

#### CONTINUITY OF GOVERNMENT

Unless in conflict with any statues and/or ordinances the line of succession for the Chatham Police Department will be:

1. Mayor of Chatham.
2. Chief of Police
3. Sergeants of Chatham Police Dept.

APPENDICES

1. Pre-emergency operational checklist.
2. Response operations checklist.
3. Recovery operations checklist.
4. Chatham Police Department Organizational Chart.
5. Mutual Aid Agreement.

APPENDIX 1

PRE-EMERGENCY OPERATIONS CHECKLIST

- \_\_\_ 1. Identify agencies, organizations, and local citizens capable of providing supporting services in time of emergency.
- \_\_\_ 2. Develop a training program to prepare these volunteers for the role they will fill.
- \_\_\_ 3. Identify those facilities that will require protection in the event of a major emergency. (Command Post, key facilities, shelters, etc.)
- \_\_\_ 4. Develop plans to safeguard vital facilities.
- \_\_\_ 5. Develop procedures for securing a disaster scene, and allowing entry to authorized persons.
- \_\_\_ 6. Provide specialized training to department personnel to prepare them for emergency response. (radiological, hazardous materials, bomb search, and passive defense measures.)
- \_\_\_ 7. If temporary shelter is needed for department personnel or their families, shelter space can be provided through the Chatham ESDA office.

APPENDIX 2

RESPONSE OPERATIONAL CHECKLIST.

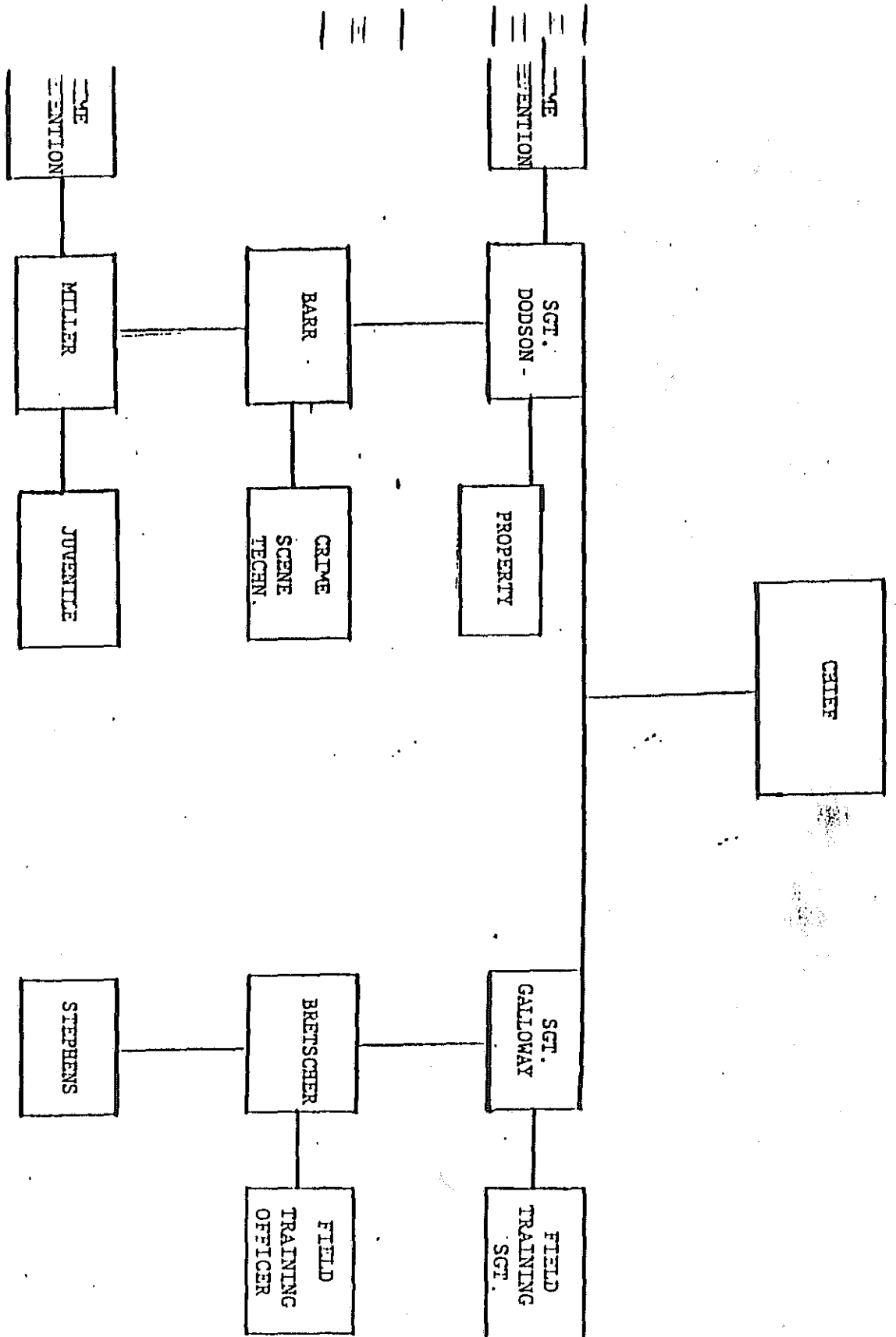
- \_\_\_\_\_ 1. Following the occurrences of a major emergency or disaster situation, the Chatham ESDA Director shall ensure that the Chatham Police has been advised of the situation.
- \_\_\_\_\_ 2. The Police Chief and/or his alternate shall establish or report to an already operating Command Post.
- \_\_\_\_\_ 3. The Chief or his alternate shall report to the Command Center to ensure command of operations.
- \_\_\_\_\_ 4. If appropriate, establish or augment protective measures for facilities previously determined to be vital.
- \_\_\_\_\_ 5. Establish a security perimeter around the disaster site, and admit only authorized personnel.
- \_\_\_\_\_ 6. Establish a staging area for incoming law enforcement resources responding to a mutual aid request.
- \_\_\_\_\_ 7. Receive, analyze and expedite requests for mobile support.
- \_\_\_\_\_ 8. Patrol any evacuated or secure area to prevent trespassing and/or looting.
- \_\_\_\_\_ 9. If appropriate, take passive defense measures in the investigation of unexploded ordinance, reporting this information to the State Police.
- \_\_\_\_\_ 10. If the Command Center is activated the Command Post will make periodic status reports detailing the emergency's progress.
- \_\_\_\_\_ 11. Continue to respond to request from the community using remaining or mutual aid resources.



APPENIX 3

RECOVERY OPERATIONS CHECKLIST

1. Continue to provide emergency law enforcement services as long as necessary.
2. Continue to respond to routine calls from residents.
3. Assist in damage assessment as requested.
4. Continue to maintain ("secured areas") until removal is authorized by the Command Center.
5. Prepare reports on the situation for inclusion into the official record and later critique.



## FIRE

### Statement of Purposes

The purpose of this annex is to identify those agencies that would provide a system of coordinating fire services. This system will include: fire prevention, suppression, and scene control.

### Situations and Assumptions

#### Situations

There are numerous industries as well as the farming community that use hazardous materials. The fire personnel of the Chatham Fire Protection District have had extensive training in fire prevention, suppression and scene control. These individuals are continually confronted with a wide variety of firefighting problems.

#### Assumptions

First response to any fire incident will be accomplished by the Chatham Fire Department or its designee. If additional personnel or equipment are needed to cope with a major fire incident, a mutual aid system will be used. Additional specialized equipment may be obtained through State and Federal Agencies. *The incident Commander shall be the Fire Chief or his designee.*

#### Concept of Operations

The Chief Executive Officer, or his designee (ESDA Coordinator) is responsible for coordinating the disaster response and recovery operations. The Primary Fire Chief or his/her alternate has been identified as the "Primary Fire Representative" for Fire Services.

Fire operations requiring a single fire department will be handled in their usual way. Major emergencies or disaster situations requiring mutual aid response will be dispatched through the 911 Cap Com at the request of the Command Post at the disaster site.

In the event of a major emergency or disaster requiring the evacuation of a city, designated fire personnel and equipment will relocate to and supplement the reception area's fire service. Designated essential personnel will be selected to remain behind or return to the city when needed to perform critical community tasks.

### Organization and Responsibilities

The responsibility for providing fire services rests with the Chatham Fire Department of Sangamon County. This fire department is headed by a fire chief. Firefighters are composed of volunteer personnel of the Chatham Fire Department providing services to their city, village, or township fire protection districts.

## Organization and Responsibilities (Con't).

In the event additional manpower and equipment are needed in a major emergency or disaster, the requesting fire chief or his/her alternate may request mutual aid assistance through the 911 Cap Com. Fire personnel responding as a result of mutual aid will report to and serve under direction of the "Primary Fire Representative" in charge at the scene.

## Direction and Control

Field operations will be coordinated by the "Primary Fire Representative" in charge, through the command post at or near the incident site.

Communications and coordination of responding mutual aid fire services will be through the 911 Cap Com and relayed to the "Primary Fire Representative" at the scene.

## Continuity of Government

The line of succession shall be as established for each fire department/district within Sangamon County. (Chief, Asst. Chief, etc.)

## Appendices

1. Pre-emergency Operations Checklist (Including mitigation and preparedness phase)
2. Response Operations Checklist
3. Recovery Operations Checklist
4. Fire Chief of Chatham Fire Protection District

APPENDIX 1

PRE-EMERGENCY OPERATIONS CHECKLIST

- \_\_\_ 1. Review city hazard analysis to determine possible fire hazards.
- \_\_\_ 2. Maintain up-to-date equipment inventory listing.
- \_\_\_ 3. Provide specialty training to department personnel including hazardous material, radiological response, etc.
- \_\_\_ 4. Participate in annual mutual aid exercises to ensure readiness to respond to a major emergency or disaster.
- \_\_\_ 5. If warning time permits, prior to an emergency, alert and call in all department personnel or place personnel on stand-by status.
- \_\_\_ 6. Check out emergency electrical generating equipment of the Chatham Fire Department.

## APPENDIX 2

### RESPONSE OPERATIONS CHECKLIST

1. Following the determination that a major emergency or disaster situation has occurred, the Senior Officer in Charge will insure that the Fire Chief has been advised of the situation.
2. The Senior Officer in Charge shall establish a functioning Command Post.
3. The Fire Chief shall report to the Command Post to assume command of fire operations.
4. Following an assessment of the situation, if it is determined that mutual aid assistance will be needed the Incident Commander at the Command Post will notify the Cap Com (911) Center
  - a. Nature of incident
  - b. Location of incident
  - c. Specific mutual aid assistance required
  - d. Location of equipment staging area
5. If mutual aid assistance is requested, the Incident Commander shall establish an equipment staging area to accommodate incoming equipment and manpower.
6. If the EOC is activated, the Command Post shall make periodic status reports detailing the emergency's progress.
7. The Incident Commander will coordinate, through the Command Post, with other department to ensure traffic control, crowd control, additional resources, etc.
8. Continue to respond to requests from the community using remaining or mutual aid resources.

## SEARCH AND RESCUE

### Statement of Purpose

The purpose of this annex is to identify those agencies that would provide a system of Search and Rescue Services. This system will include: rescue of trapped people in buildings, vehicles and drowning, also search for lost persons.

### Situations and Assumptions

#### Situations

There are numerous buildings lakes and ponds in Chatham.

#### Assumptions

First response to any search or rescue incident in Chatham, Illinois will be accomplished by individual Police, Fire and EMS Departments. If additional personnel are needed to cope with a major search/rescue incident, mutual aid system will be used. Additional specialized equipment may be obtained through the local ESDA Agency.

#### Concept of Operations

The Village President and ESDA Coordinator are responsible for ensuring that disaster response and recovery operations are effective. The Chatham Fire Department has been identified as the "Primary Agency" for Search and Rescue Services in Chatham.

Search/Rescue operations involving a specific jurisdiction will be handled in their usual way. Major emergencies or disaster situations requiring mutual aid response will be dispatched through the 911 Cap Com at the request of the Command Post at the incident site.

#### Organization and Responsibilities

The responsibility for providing search/rescue services rests within the various jurisdictions in Chatham. These jurisdictions are headed by the police, who is responsible to the chief executive officer of the city, and the Fire Department who is responsible to the Fire Chief of the fire protection district. Man-power is composed of paid, paid on-call and volunteer personnel of these various departments providing service to their city, village, or township.

In the event additional manpower and equipment are needed in a major emergency or disaster, the requesting chief of his/her alternate may request mutual aid assistance through 911 Cap Com report to and serve under direction of the "Primary Search/Rescue Representative" in charge at the scene.

### Direction and Control

A command post will be established and will be the control point for all major decisions concerning search and rescue operations. Field operations will be coordinated by the "Primary Search/Rescue Representative" in charge.

Communications and coordination of responding mutual aid Search/Rescue services will be through the 911 Cap Com and relayed to the "Primary Search/Rescue Representative" at the scene.

### Continuity of Government

The line of succession shall be as established for each fire department/district within Sangamon County. (Chief, Asst. Chief, etc.)

### Appendices

1. Pre-emergency Operations Checklist
2. Response Operations Checklist
3. Recovery Operations Checklist
4. Rescue Squad Roster
5. Rapid Response Dive Team Roster



APPENDIX 1

PRE-EMERGENCY OPERATIONS CHECKLIST

- \_\_\_ 1. Review city hazard analysis to determine possible fire hazards.
- \_\_\_ 2. Maintain up-date equipment inventory listing.
- \_\_\_ 3. Provide specialty training to department personnel including hazardous material, high rise rescue, search and recovery and water response.
- \_\_\_ 4. Participate in annual mutual aid exercises to ensure readiness to respond to a major emergency or disaster.
- \_\_\_ 5. If Warning time permits, prior to an emergency, alert and call in all department personnel or place personnel on stand-by status.
- \_\_\_ 6. Check out emergency electrical generating equipment in Chatham Fire Department.

## APPENDIX 2

### RESPONSE OPERATIONS CHECKLIST

- \_\_\_ 1. Following the determination that a major emergency or disaster situation has occurred, the Senior Officer in Charge will insure that the Rescue Chief has been advised of the situation.
- \_\_\_ 2. The Senior Officer in Charge shall establish or report to an already functioning Command Post.
- \_\_\_ 3. The Rescue Chief shall report to the EOC or if appropriate the Command Post to assume command of search/rescue operations.
- \_\_\_ 4. Following an assessment of the situation, if it is determined that mutual aid assistance will be needed the Incident Commander at the Command Post will notify the Cap Com (911) Center or the EOC if operational the following:
  - a. Nature of incident.
  - b. Location of incident.
  - c. Specific mutual aid assistance required.
  - d. Location of equipment staging area.
- \_\_\_ 5. If mutual aid assistance is requested, the Incident Commander shall establish an equipment staging area to accommodate incoming equipment and manpower.
- \_\_\_ 6. If the EOC is activated, the Command Post shall make periodic status reports detailing the emergency's progress.
- \_\_\_ 7. The Incident Commander will coordinate, through the Command Post, with other department to ensure traffic control, crowd control, additional resources, etc.
- \_\_\_ 8. Continue to respond to requests from the community using remaining or mutual aid resources.

**APPENDIX 3**

**RECOVERY OPERATIONS CHECKLIST**

1. Continue to respond to request for assistance from the community.
2. Monitor demolition of damaged structures.
3. Repair or replace damaged fire equipment belonging to Chatham Fire Department.
4. Prepare reports on the situation for inclusion into the official record and later critique.

PROCEDURE FOR TAKING APPARATUS TO ALARMS

IN TOWN FIRES

FIRST ALARM

1 - E-3  
2 - E-5  
3 - S-12

SECOND ALARM

1 - E-2  
2 - T-1  
3 - S-1

OUT OF TOWN FIRES

1 - E-3  
2 - E-2  
3 - T-1  
4 - S-12

1 - E-5  
2 - E-4  
3 - S-1

VEHICLE FIRE

1 - E-2  
2 - S-12

1 - E-3  
2 - E-4

GRASS FIRES

1 - E-3  
2 - E-4  
3 - E-2 (IF CALLED)  
4 - T-1 IF CALLED

MEDICAL EMERGENCIES

1 - S-1

1 - S-12

ANY 10-50

1 - S-1  
2 - E-2

1 - S-12  
2 - E-3

NOTICE:

~~ANY FIRE SOLE IN SOUTH BATH OR DUNSTON PHILA WILL BE RESPONDED  
AS ON OUT OF TOWN FIRE~~

ANY UNITS OTHER THAN THOSE LISTED ABOVE AS FIRST ALARM SHOULD NOT BE TAKEN TO THE SCENE UNTIL THE OFFICER IN CHARGE AT THE SCENE CALLS FOR IT.

## SHELTERS

### I. Statement Of Purpose

It is often necessary to provide assistance to persons who have become stranded, isolated or are in some way displaced from their homes as a result of some man made natural disaster.

Springfield and Sangamon County Emergency Services and Disaster Agency will ensure shelter of these victims during and after the disaster as needed. Trained shelter personnel, who are familiar with shelter management, will be on duty to maintain the shelter and handle any problems or needs that may arise.

### II. Definition Of A Shelter

A shelter is a temporary housing facility to be utilized only through the course of an emergency. The need for shelters depends upon the severity of an emergency. Some shelters will only be needed for a few hours, while others may be needed for longer periods (maybe up to a few weeks) or until normal living conditions are restored. If necessary, people will be advised about other agencies that can assist them in locating temporary (or permanent) housing after the shelter is no longer needed to house a large group of people.

Except for fall-out shelters, a shelter can be any facility large enough to house persons who are temporarily displaced, is close to the disaster area or main routes and is unaffected by the emergency conditions. Permission to use a building as an emergency shelter must be obtained from the building owner or the individual who is in charge of the buildings.

### III. Procedures For Opening A Shelter

In the event that it becomes necessary to open a temporary emergency shelter in the ~~Village of Chatham~~ or in Sangamon County, the following procedures shall be followed:

- A. The agency discovering the need for the shelter, whether it be law enforcement, fire, medical, etc. shall notify the Local ESDA Director, and the Sangamon County ESDA Director.
- B. The local ESDA Director, shall determine which building to use and shall request the responsible individual to open the building, and to authorize its use as a temporary shelter.
- C. The local ESDA Director, or if necessary the Sangamon County ESDA Director, shall notify the following individuals, agencies, and organizations of the shelter opening:

- 1. Mayor or Village President
- \* 2. County Board Chairman
- 3. Local ESDA Director
- \* 4. Sangamon County ESDA Director
- \* 5. Sangamon County Health Department
- 6. Local Law Enforcement Agencies
- 7. Local Fire and EMS Department
- \* 8. American Red Cross
- \* 9. Salvation Army
- \* 10. IESDA
- 11. Local School Transit
- \* 12. Springfield Mass Transit District

ASTERICK \* These agencies listed are directed to be notified thru SPFLD/Sang. CO. ESDA.

- D. The following are the responsibilities of the above individuals, agencies, and organizations at the shelter site:

- 1. Mayor or Village President
  - a. Shall be available for consultation and shall authorize expenditures for food, medical supplies and other essential needs, if necessary.

2. County Board Chairman
  - a. Shall be available for consultation and shall authorize expenditures for food, medical supplies and other essential needs, if necessary.
  
3. LOCAL ESDA DIRECTOR
  
4. SANGAMON COUNTY ESDA DIRECTOR
  
5. Sangamon County Health And Safety Department
  - (1) Coordinate emergency health and medical operations in conjunction with local hospitals and clinics.
  - (2) Coordinate patient distribution between local hospitals and clinics.
  - (3) If required, establish a emergency morgue under the direction of the Coroner.
  - (4) Maintain a log of special medicines and a list of names of persons with special medical problems.
  - (5) Provide nurses, doctors and other medical personnel for duty at emergency shelters as needed.
  
6. Local Law Enforcement Agencies
  - a. Limit access of non-shelterees in the shelter area.
  - b. Maintain law and order in the shelter.
  - c. Maintain a liaison with their headquarters.
  - d. Keep the shelter management informed of the emergency situation.
  - e. Provide any service needed pertaining to law enforcement.
  - f. Provide assistance in managing the shelter. In the event a city or village is unable to provide the needed services, the sheriff's office will be contacted for assistance.
  
7. Local Fire and EMS Department
  - a. Enforce all fire safety rules.
  - b. Provide medical services in the event of a emergency.
  - c. Establish a communication network on the ESDA frequencies.
  
8. American Red Cross
  - a. Provide all essential food for a balanced daily diet.
  - b. Provide one complete set of clothing for each member when clothing has been destroyed.
  - c. Provide first aid.
  - d. Provide temporary housing in motels up to 5 families, this could include rent subsidies.
  - e. Set up one stop assistance centers.
  - f. Provide temporary repairs of homes as needed.
  - g. Provide essential household furnishings.

9. Salvation Army

- a. Provide coffee and donuts upon opening the shelter.
- b. Provide on-hand clothing for shelter occupants.
- c. Provide counseling as needed.
- d. Assist in shelter operations.

10. IESDA

- a. Provide worker,s compensation for volunteers.
- b. Provide communication van if needed.
- c. Provide contact with other state emergency service agencies.
- d. Provide contact with private sector emergency service agencies.
- e. Provide generators.
- f. Provide radiological monitoring equipment and personnel.

11. Local School Transit

- a. Assist with Mass Transportation utilizing buses and personnel if needed.

12. Springfield Mass Transit District

- a. Provide any type of Mass Transportation as needed.



SPRINGFIELD AND SANGAMON COUNTY  
EMERGENCY SERVICES AND DISASTER AGENCY

SHELTER ASSESSMENT FORM

Facility Chatham Community Building Address Mulberry Street Ph. No Phone  
Contact John Whitney Address 18 Pheasant Run Ph. 483-4535  
Drive 483-2454  
Custodian Mark Gleason Address " " " Ph. 483-2453

Sleeping Capacity (40 Sq.Ft./person) 120 #Phones/Lines None

No. of beds or cots at Shelter None # of blankets None

Utilities: Electric \_\_\_\_\_ Gas X Aux. Power Avail. None

Auxiliary Power Requirements: Unknown

Type of Heating System: Gas

Toilet Facilities: #Stools: Men 3 Women 3  
#Washbasins: Men 2 Women 2  
#Showers: Men 2 Women 2

How many days food supply stored in shelter? None

Feeding Facilities:

Stoves: No. 1 each Size 10 Burn Fuel Gas

Refrigerators: No. 1 each Type Kenmore Size Refrigerator-Freezer

Meal Capacity of Kitchen 350 per serving

Seating Capacity of Feeding Area 300 Per Serving

Are tables and chairs for feeding now in building Yes

Number of persons in facility available for feeding, registration, etc.

25 Volunteers

Comments: \_\_\_\_\_  
\_\_\_\_\_  
\_\_\_\_\_  
\_\_\_\_\_  
\_\_\_\_\_

APRIL 1990

VILLAGE OF CHATHAM  
EMERGENCY SERVICES AND DISASTER AGENCY

SHELTER ASSESSMENT FORM

FACILITY Chatham Baptist Church ADDRESS 1500 E. WALNUT PH. 483-2471  
CONTACT Donald Mayberry ADDRESS 617 E. Chestnut PH. 483-4761  
CUSTODIAN Nick Nunes ADDRESS Glen Arm. PH. \_\_\_\_\_

SLEEPING CAPACITY (40 SQ. FT./PERSON) 75-100 #PHONES/LINES two (2)

# OF BEDS OR COTS AT SHELTER 0 # OF BLANKETS 0

UTILITIES: ELECTRIC X GAS X <sup>heat.</sup> AUX. POWER AVAILABLE \_\_\_\_\_

AUXILIARY POWER REQUIREMENTS: \_\_\_\_\_

TYPE OF HEATING SYSTEM: Gas - forced air & hot water heat in floors

TOILET FACILITIES: #STOOLS: MEN 3 WOMEN 3  
#WASHBASINS: MEN 3 WOMEN 3  
#SHOWERS: MEN 0 WOMEN 0

HOW MANY DAYS FOOD SUPPLY STORED IN SHELTER? \_\_\_\_\_

FEEDING FACILITIES:

STOVES: # 1 SIZE 4 burner FUEL GAS  
REFRIGERATORS: # 2 TYPE standard SIZE "

MEAL CAPACITY OF KITCHEN 100

SEATING CAPACITY OF FEEDING AREA 100

ARE TABLES AND CHAIRS FOR FEEDING NOW IN BUILDING Yes

INDIVIDUAL IN YOUR ORGANIZATION WHO WOULD BE WILLING TO SERVE AS SHELTER ADVISOR TO ASSIST EMERGENCY SERVICES AND DISASTER AGENCY COMMITTEE:

NAME Donald Mayberry ADDRESS SAME AS ABOVE PH. \_\_\_\_\_

NUMBER OF PERSONS IN FACILITY AVAILABLE FOR FEEDING, REGISTRATION, ETC.  
(50?)

COMMENTS:  
\_\_\_\_\_  
\_\_\_\_\_  
\_\_\_\_\_

SIGNATURE D. & D. Mayberry

APRIL 1990

VILLAGE OF CHATHAM  
EMERGENCY SERVICES AND DISASTER AGENCY

SHELTER ASSESSMENT FORM

FACILITY St. John's Lutheran ADDRESS Rt. 4, N. Main Box 377 PH. 483-2612

CONTACT <sup>REV.</sup> Glenn Strohshain ADDRESS 501 Oxford PH. 483-4617

CUSTODIAN \_\_\_\_\_ ADDRESS \_\_\_\_\_ PH. \_\_\_\_\_

SLEEPING CAPACITY (40 SQ. FT./PERSON) \_\_\_\_\_ #PHONES/LINES 2

# OF BEDS OR COTS AT SHELTER 0 # OF BLANKETS 0

UTILITIES: ELECTRIC  GAS  AUX. POWER AVAILABLE \_\_\_\_\_

AUXILIARY POWER REQUIREMENTS: \_\_\_\_\_

TYPE OF HEATING SYSTEM: FORCED AIR

TOILET FACILITIES: #STOOLS: MEN 1 WOMEN 3

#WASHBASINS: MEN 2 WOMEN 1

#SHOWERS: MEN 0 WOMEN 0

HOW MANY DAYS FOOD SUPPLY STORED IN SHELTER? \_\_\_\_\_

FEEDING FACILITIES:

STOVES: # 1 <sup>3 OVENS</sup> SIZE LARGE <sup>COMMERCIAL</sup> FUEL ELECTRIC

REFRIGERATORS: # 2 TYPE \_\_\_\_\_ SIZE \_\_\_\_\_

MEAL CAPACITY OF KITCHEN 1

SEATING CAPACITY OF FEEDING AREA APPROX 150-175

ARE TABLES AND CHAIRS FOR FEEDING NOW IN BUILDING YES

INDIVIDUAL IN YOUR ORGANIZATION WHO WOULD BE WILLING TO SERVE AS SHELTER ADVISOR TO ASSIST EMERGENCY SERVICES AND DISASTER AGENCY COMMITTEE:

NAME KAREN REEVES ADDRESS 10 Randlewood PH. 483-3167

NUMBER OF PERSONS IN FACILITY AVAILABLE FOR FEEDING, REGISTRATION, ETC.

COMMENTS:

\_\_\_\_\_  
\_\_\_\_\_  
\_\_\_\_\_

SIGNATURE Rev. Glenn Strohshain

APRIL 1990

VILLAGE OF CHATHAM  
EMERGENCY SERVICES AND DISASTER AGENCY

SHELTER ASSESSMENT FORM

FACILITY Chatham Elem. ADDRESS 525 S. College PH. 483-2411

CONTACT Bill Bird ADDRESS Auburn PH. 438-3620

CUSTODIAN Randy Weiss ADDRESS 412 West Locust PH. 483-3661

SLEEPING CAPACITY (40 SQ. FT./PERSON) \_\_\_\_\_ #PHONES/LINES 4

# OF BEDS OR COTS AT SHELTER 3 # OF BLANKETS 3

UTILITIES: ELECTRIC yes GAS yes AUX. POWER AVAILABLE No

AUXILIARY POWER REQUIREMENTS: ?

TYPE OF HEATING SYSTEM: Gas

TOILET FACILITIES: #STOOLS: MEN 14 WOMEN 25

#WASHBASINS: MEN 10 WOMEN 20

#SHOWERS: MEN 0 WOMEN 0

HOW MANY DAYS FOOD SUPPLY STORED IN SHELTER? 0

FEEDING FACILITIES:

STOVES: # 2 <sup>10 burner</sup> SIZE 3 ovens FUEL gas

REFRIGERATORS: # 3 TYPE walk in SIZE Large

MEAL CAPACITY OF KITCHEN 500

SEATING CAPACITY OF FEEDING AREA 300

ARE TABLES AND CHAIRS FOR FEEDING NOW IN BUILDING yes

INDIVIDUAL IN YOUR ORGANIZATION WHO WOULD BE WILLING TO SERVE AS SHELTER ADVISOR TO ASSIST EMERGENCY SERVICES AND DISASTER AGENCY COMMITTEE:

NAME Bill Bird ADDRESS Auburn PH. 438-3620

NUMBER OF PERSONS IN FACILITY AVAILABLE FOR FEEDING, REGISTRATION, ETC.

None during none school hours or days

COMMENTS:

\_\_\_\_\_  
\_\_\_\_\_  
\_\_\_\_\_

Ronald S. Kaurang Supt.

APRIL 1990

VILLAGE OF CHATHAM  
EMERGENCY SERVICES AND DISASTER AGENCY

SHELTER ASSESSMENT FORM

FACILITY Glenwood Sr High ADDRESS RR #1 Chatham PH. 483-2424  
CONTACT Mike Collins ADDRESS 71 Ramblewood Chatham PH. 483-3963

CUSTODIAN \_\_\_\_\_ ADDRESS \_\_\_\_\_ PH. \_\_\_\_\_

SLEEPING CAPACITY (40 SQ.FT./PERSON) \_\_\_\_\_ #PHONES/LINES 4

# OF BEDS OR COTS AT SHELTER 3 # OF BLANKETS 3

UTILITIES: ELECTRIC yes GAS yes AUX. POWER AVAILABLE No

AUXILIARY POWER REQUIREMENTS: ?

TYPE OF HEATING SYSTEM: Hot water - Natural Gas Fired Boilers

TOILET FACILITIES: #STOOLS: MEN 20 WOMEN 30

#WASHBASINS: MEN 12 WOMEN 15

#SHOWERS: MEN 3 rooms WOMEN 3 rooms

HOW MANY DAYS FOOD SUPPLY STORED IN SHELTER? 0

FEEDING FACILITIES: 3 stoves  
STOVES: # 7 ovens SIZE Large FUEL Gas

REFRIGERATORS: # 1 upright TYPE large walk in SIZE large

MEAL CAPACITY OF KITCHEN 600

SEATING CAPACITY OF FEEDING AREA 300

ARE TABLES AND CHAIRS FOR FEEDING NOW IN BUILDING yes

INDIVIDUAL IN YOUR ORGANIZATION WHO WOULD BE WILLING TO SERVE AS SHELTER ADVISOR TO ASSIST EMERGENCY SERVICES AND DISASTER AGENCY COMMITTEE:

NAME Mike Collins ADDRESS 71 Ramblewood PH. 483-3963

NUMBER OF PERSONS IN FACILITY AVAILABLE FOR FEEDING, REGISTRATION, ETC.

None during non school days or hours

COMMENTS:  
\_\_\_\_\_  
\_\_\_\_\_  
\_\_\_\_\_

Ronald E. Kaurany Supt

APRIL 1990

VILLAGE OF CHATHAM  
EMERGENCY SERVICES AND DISASTER AGENCY

SHELTER ASSESSMENT FORM

FACILITY Glenwood Jr High ADDRESS RR #1 Chatham PH. 483-2481  
CONTACT Rick Taylor ADDRESS 18 Ramblewood PH. 483-4304  
CUSTODIAN \_\_\_\_\_ ADDRESS \_\_\_\_\_ PH. \_\_\_\_\_

SLEEPING CAPACITY (40 SQ.FT./PERSON) \_\_\_\_\_ #PHONES/LINES 4

# OF BEDS OR COTS AT SHELTER 3 # OF BLANKETS 3

UTILITIES: ELECTRIC yes GAS yes AUX. POWER AVAILABLE No

AUXILIARY POWER REQUIREMENTS: ?

TYPE OF HEATING SYSTEM: Gas - boiler

TOILET FACILITIES: #STOOLS: MEN 20 WOMEN 25

#WASHBASINS: MEN 15 WOMEN 20

#SHOWERS: MEN 5 WOMEN 5

HOW MANY DAYS FOOD SUPPLY STORED IN SHELTER? 0

FEEDING FACILITIES:

STOVES: # 1 SIZE large FUEL gas

REFRIGERATORS: # 1 <sup>walk-in</sup> upright TYPE large SIZE large

MEAL CAPACITY OF KITCHEN 300

SEATING CAPACITY OF FEEDING AREA 300

ARE TABLES AND CHAIRS FOR FEEDING NOW IN BUILDING yes

INDIVIDUAL IN YOUR ORGANIZATION WHO WOULD BE WILLING TO SERVE AS SHELTER ADVISOR TO ASSIST EMERGENCY SERVICES AND DISASTER AGENCY COMMITTEE:

NAME Rick Taylor ADDRESS 18 Ramblewood PH. 483-4304

NUMBER OF PERSONS IN FACILITY AVAILABLE FOR FEEDING, REGISTRATION, ETC.

None during non-school hours and days

COMMENTS:

\_\_\_\_\_  
\_\_\_\_\_  
\_\_\_\_\_

SIGNATURE Ronald E. Kaurang Supv.

APRIL 1990

VILLAGE OF CHATHAM  
EMERGENCY SERVICES AND DISASTER AGENCY

SHELTER ASSESSMENT FORM

FACILITY Ball Elementary ADDRESS RR #1 Chatham PH. 483-2414  
CONTACT Jim Jackson ADDRESS 800 S. Durkin Dr  
Springfield 62204 PH. 793-1797  
CUSTODIAN \_\_\_\_\_ ADDRESS \_\_\_\_\_ PH. \_\_\_\_\_

SLEEPING CAPACITY (40 SQ. FT./PERSON) \_\_\_\_\_ #PHONES/LINES 3

# OF BEDS OR COTS AT SHELTER 3 # OF BLANKETS \_\_\_\_\_

UTILITIES: ELECTRIC Yes GAS Yes AUX. POWER AVAILABLE No

AUXILIARY POWER REQUIREMENTS: \_\_\_\_\_

TYPE OF HEATING SYSTEM: Hot Water - Natural Gas Fired Boiler

TOILET FACILITIES: #STOOLS: MEN 12 WOMEN 14

#WASHBASINS: MEN 6 WOMEN 6

#SHOWERS: MEN 0 WOMEN 0

HOW MANY DAYS FOOD SUPPLY STORED IN SHELTER? 0

FEEDING FACILITIES:

STOVES: # 2 SIZE 10 burners FUEL Gas <sup>2ovens</sup>

REFRIGERATORS: # 2 TYPE walk in SIZE Electric <sup>upright</sup>

MEAL CAPACITY OF KITCHEN 300 to 400

SEATING CAPACITY OF FEEDING AREA 250

ARE TABLES AND CHAIRS FOR FEEDING NOW IN BUILDING Yes

INDIVIDUAL IN YOUR ORGANIZATION WHO WOULD BE WILLING TO SERVE AS SHELTER ADVISOR TO ASSIST EMERGENCY SERVICES AND DISASTER AGENCY COMMITTEE:

NAME Jim Jackson ADDRESS Same as above PH. 793-1797

NUMBER OF PERSONS IN FACILITY AVAILABLE FOR FEEDING, REGISTRATION, ETC.

NO ONE DURING NON school days or hours.

COMMENTS:

I will answer any additional questions you might have!

SIGNATURE Donald P. Kaurang Supt.

APRIL 1990

VILLAGE OF CHATHAM  
EMERGENCY SERVICES AND DISASTER AGENCY

SHELTER ASSESSMENT FORM

FACILITY WILLIAM CHRISTIAN CHURCH ADDRESS 50 MAIN ROAD PH. 483 3987

CONTACT RIK WOODRUB ADDRESS 6 SWEET CREEK, GLENVIEW PH. 483 3693

CUSTODIAN \_\_\_\_\_ ADDRESS \_\_\_\_\_ PH. \_\_\_\_\_

SLEEPING CAPACITY (40 SQ. FT./PERSON) 2000 SQ/FT. #PHONES/LINES 1

# OF BEDS OR COTS AT SHELTER 0 # OF BLANKETS 0

UTILITIES: ELECTRIC  GAS  AUX. POWER AVAILABLE NO

AUXILIARY POWER REQUIREMENTS: \_\_\_\_\_

TYPE OF HEATING SYSTEM: GAS

TOILET FACILITIES: #STOOLS: MEN 3 WOMEN 3

#WASHBASINS: MEN 2 WOMEN 2

#SHOWERS: MEN 0 WOMEN 0

HOW MANY DAYS FOOD SUPPLY STORED IN SHELTER? 0

FEEDING FACILITIES:

STOVES: # 1 SIZE 30" FUEL ELECTRIC

REFRIGERATORS: # 2 TYPE \_\_\_\_\_ SIZE ELECTRIC

MEAL CAPACITY OF KITCHEN ?

SEATING CAPACITY OF FEEDING AREA 100 IN FOLLOWSHIP HALL

ARE TABLES AND CHAIRS FOR FEEDING NOW IN BUILDING YES

INDIVIDUAL IN YOUR ORGANIZATION WHO WOULD BE WILLING TO SERVE AS SHELTER ADVISOR TO ASSIST EMERGENCY SERVICES AND DISASTER AGENCY COMMITTEE:

NAME \_\_\_\_\_ ADDRESS \_\_\_\_\_ PH. \_\_\_\_\_

NUMBER OF PERSONS IN FACILITY AVAILABLE FOR FEEDING, REGISTRATION, ETC.

COMMENTS:

\_\_\_\_\_  
\_\_\_\_\_  
\_\_\_\_\_

SIGNATURE

*Rik Woodruff*



APRIL 1990

VILLAGE OF CHATHAM  
EMERGENCY SERVICES AND DISASTER AGENCY

SHELTER ASSESSMENT FORM

FACILITY \_\_\_\_\_ ADDRESS \_\_\_\_\_ PH. \_\_\_\_\_

CONTACT \_\_\_\_\_ ADDRESS \_\_\_\_\_ PH. \_\_\_\_\_

CUSTODIAN \_\_\_\_\_ ADDRESS \_\_\_\_\_ PH. \_\_\_\_\_

SLEEPING CAPACITY (40 SQ. FT./PERSON) \_\_\_\_\_ #PHONES/LINES \_\_\_\_\_

# OF BEDS OR COTS AT SHELTER \_\_\_\_\_ # OF BLANKETS \_\_\_\_\_

UTILITIES: ELECTRIC \_\_\_\_\_ GAS \_\_\_\_\_ AUX. POWER AVAILABLE \_\_\_\_\_

AUXILIARY POWER REQUIREMENTS: \_\_\_\_\_

TYPE OF HEATING SYSTEM: \_\_\_\_\_

TOILET FACILITIES: #STOOLS: MEN \_\_\_\_\_ WOMEN \_\_\_\_\_

#WASHBASINS: MEN \_\_\_\_\_ WOMEN \_\_\_\_\_

#SHOWERS: MEN \_\_\_\_\_ WOMEN \_\_\_\_\_

HOW MANY DAYS FOOD SUPPLY STORED IN SHELTER? \_\_\_\_\_

FEEDING FACILITIES:

STOVES: # \_\_\_\_\_ SIZE \_\_\_\_\_ FUEL \_\_\_\_\_

REFRIGERATORS: # \_\_\_\_\_ TYPE \_\_\_\_\_ SIZE \_\_\_\_\_

MEAL CAPACITY OF KITCHEN \_\_\_\_\_

SEATING CAPACITY OF FEEDING AREA \_\_\_\_\_

ARE TABLES AND CHAIRS FOR FEEDING NOW IN BUILDING \_\_\_\_\_

INDIVIDUAL IN YOUR ORGANIZATION WHO WOULD BE WILLING TO SERVE AS SHELTER  
ADVISOR TO ASSIST EMERGENCY SERVICES AND DISASTER AGENCY COMMITTEE:

NAME \_\_\_\_\_ ADDRESS \_\_\_\_\_ PH. \_\_\_\_\_

NUMBER OF PERSONS IN FACILITY AVAILABLE FOR FEEDING, REGISTRATION, ETC.

\_\_\_\_\_

COMMENTS:

\_\_\_\_\_  
\_\_\_\_\_  
\_\_\_\_\_  
\_\_\_\_\_

SIGNATURE \_\_\_\_\_

## Public Information Officer

### Statement of Purpose

This appendix recognizes and acknowledges the importance of providing the general public with adequate information as rapidly as possible in the event of a disaster. The role of the news media in such a disaster is invaluable to the agencies involved in disaster response by reducing inquiries from the public. Every effort should be made to cooperate with the news media in providing information and equal access to the scene of response, within the bounds of safety and efficient operations, and in recognition of the rights of the news media, to perform their proper function.

The purpose of this appendix is to establish general policy for providing information to the public and equal access to certified representatives of legitimate news media during time of emergency.

### Concept of Operations

The following types of information shall be provided to the public as soon as possible in as much detail as possible:

1. Nature of disaster
2. Location of disaster
3. Time of disaster
4. Number of casualties
5. Identification, age, sex, address of casualties
6. Nature and severity of injuries
7. Condition of casualties and where treated
8. Agencies involved in response
9. Scope of agency involvement

While it is recognized that personnel involved in response to a disaster have certain responsibilities for the protection of life and property and will be under varying degrees of mental and physical stress, it is also recognized that certified representatives of the news media should be provided every opportunity for equal access to the scene of a disaster response activity and to interview personnel when it is consistent with safety and effective operation.

#### Collection and Dissemination of Information

The types of information outlined in the Concept of Operations above shall be collected and disseminated as soon as possible by the appropriate personnel as follows:

1. Mobile Command Post Officer, or his designee, will provide a timely evaluation of the disaster to the Public Information Office, to be followed, as appropriate, by additional details as they are available.
2. <sup>A</sup> ~~The Sangamon County Sheriff's Department or their~~ designee will be assigned to the hospitals for the rapid collection of information concerning casualties, notification of next of kin, and dissemination of this information to the Public Information Officer.
3. The Public Information Officer will be responsible for the collection of information from the Mobile Command Post, hospitals, and other sources and agencies, and for the dissemination of information directly to the news media, for preparation of news releases and, where appropriate, for making announcements directly to the public via radio and/or television.

#### Access for News Media Representatives

In recognition of the public's right to know as much information as possible about a disaster, the various agencies involved will make every effort to cooperate with representatives of legitimate news media and to provide equal access to information and scenes of response activities as directed for safety and efficient operation.

1. Command Post (CP) Officer, or his designee, will allow such access as consistent with safety and efficient operation. Although on the scene access will be necessarily limited dependent on conditions, the CP Officer should use discretion in cooperating with news media representatives.
2. Each respective hospital will establish rules for access for news media representatives and these may vary for individual circumstances. As a minimum, in the event of an Mass Casualty Incident, the coordinating hospital should recognize certified press identification cards as defined under subparagraph 3.a below, provide a designated entrance for news media representatives, and provide a press room or other designated area for the use of news media representatives with access to telephones.
3. Public Information Officer will establish rules for media access at the EOC or Press Center as appropriate to conditions unless otherwise specified, news media representatives will be governed by the following rules:
  - a. When the EOC or Command Post is activated following declaration of a disaster, representatives of news media shall have access only to the designated press room area.
  - b. All media representatives at the Disaster Scene will promptly adhere to all requests made by the Command Post Officer.

NEWS MEDIA CONTACTS

NEWS PAPERS

ILLINOIS STATE JOURNAL-REGISTER

330 S. 9TH St.  
Springfield, Illinois 62705

Office	788-1300
City Desk	788-1516
City Editor	788-1516
Asst. City Editor	788-1517 or 788-1518
Photo	788-1475
Photo (Pager)	788-0077

ILLINOIS TIMES

610 S. 7TH St.  
P.O.Box 3524  
Springfield, Illinois 62703

Office	753-2226
Editor	- Fletcher Farrar
Gen. Mgr.	- Sharon Lyons
Reporter	- Don Sevener

RADIO STATIONS

WCVS/WFMB

3055 S. 4TH St.  
P.O. Box 2989  
Springfield, Illinois 62708

Office (WCVS)	544-9855
Office (WFMB)	528-3033
Newsroom	523-9100
General Manager	- Geoff Neuhoff
News Director	- Charles McBarron
Reporter	- Kathy Shane
Reporter	- Mitch Lisson

WMAY/WNNS

502 S. Allen  
P.O. Box 460  
Springfield, Illinois 62708

Office	629-7077
News Room	629-7071
President/General Manager	- Tom Kushak
News Director	- John Hoffman
Reporter	- John Hawkins
Reporter	- Dave Collins

WTAX/WDBR

Sentry Broadcasting Co.  
712 S. 31st St.  
Springfield, Illinois 62703

Office	753-5400
News Room	753-5400
Engineering	753-5411
General Manager	- Shelby Harbison
News Director	- Patrick Gordon
Reporter	- Tim Schweitzer

WSSR

S.S.U.  
Sheperd Road  
Springfield, Illinois 62708

Office	786-6516
News Room	786-6526
Tape	786-6527
Capitol Reporter	782-6058
News Director	- Rich Bradley
Capitol Reporter	- Mary F. Fagan
City Hall Reporter	- Mary Carlin

WVEM

6350 S. 6th St.  
Springfield, Illinois 62707

Office	544-3544
News Room	529-9502
Operations Manager	- Dan Ryan
News Director	- Lynn Bobo
Weather	- Vic Burnett

WYMG/WLDS

P.O. Box 1180  
Jacksonville, Illinois 62651

Office	245-7171
News Room	245-7171/243-2323/744-2211
Emergency (Booth)	744-7625
Spfld Sales (only)	546-9000

General Mgr. Jay Quesenberry

News Director Gary Scott

Reporters Terry Elden  
Sharon Paul  
Lynn Whalen  
Steve Todd

TELEVISION STATIONS

WICS - TV CHANNEL 20

2680 E. Cook St.  
Springfield, Illinois 62703

Office (8:30 a.m.) 753-5620  
News Room 753-5656  
Reporter 753-5605  
Vice President/General/Manager - Jack Connors  
News Director - Don Hickman  
City Reporter - Les Vann  
Weekend Anchor - Dave Heller

WAND - TV CHANNEL 17

Box 631  
Decatur, Illinois 62525

Office (Toll Free) 1-800-252-1601  
Dick Westbrook (Residence) 428-6277  
News Director - Dick Westbrook  
Co-Anchors - Julie Moore & Tom Green  
Reporter - Barbara Morse - Spfld. - 528-7304  
Reporter - Doug Wolfe  
Reporter - Jann Ingmire - Weekend Anchor  
Assignment Editor - Suzanne Martz - 422-7931

WCIA - TV CHANNEL 3 & 49

509 S. Neil St.  
Champaign, Illinois 61820

Office (Toll Free) 1-800-252-3349  
State House Press Room 782-2216  
Hilton (Late Night) 525-2306  
Pager 753-0904  
News Director - Dave Shaul  
Capitol Reporter - Carol Fowler

TRANSPORTATION RESOURCES

1. Springfield Ambulance Services

- a. America Ambulance 523-3636
- b. Superior Ambulance 522-8831

2. County Ambulance Services

- a. Sangamac - Auburn 438-3211
- b. Sangamac - Pawnee 625-3211
- c. Illiopolis Medical Emerg. Service 486-6426
- d. Riverton EMS - (normally Non-Transport) 753-6666

3. Outside County Ambulance Services

- a. Sangamac - Virden 965-3211
- b. Carlinville Ambulance 854-2451
- c. Shafer Ambulance - Taylorville 824-2275
- d. Decatur Ambulance 428-8641
- e. Pana Ambulance 562-3300
- f. Sutton Ambulance - Taylorville 824-2275
- g. Superior Ambulance - Jacksonville 245-7540
- h. Scott Co. Vol. Ambulance - Winchester 742-3733
- i. Menard Ambulance - Petersburg 632-7784
- k. Clinton Ambulance 935-9571
- l. Lincoln-Logan Ambulance 735-2123
- m. MECCA paramedic Ambulance - Virginia 452-3031
- n. Waverly Ambulance & Rescue 435-2341
- o. Connally-McClure Funeral Home 824-4949

4. Bus Companies

- a. Springfield Mass Transit 789-2280  
~~SPFD/SANG.CO.ESDA~~  
 (CONTACT THROUGH ESDA OFFICE)
- b. County School Districts 789-2280  
~~SPFD/SANG.CO.ESDA~~  
 (CONTACT THROUGH ESDA OFFICE)

5. Helicopters

- a. State Division of Aeronautics THRU IESDA
- b. Illinois Army National Guard THRU IESDA  
~~SPFD/SANG.CO.ESDA~~  
 (Contact Through ESDA OFFICE)



## STATE AGENCIES

State agencies listed below may provide support to mitigating an incident, when requested.

2. Request for support from any agency listed below may be made by contacting the City/County ESDA Officer at the Incident Command Post.
3. Listed below are State Agencies, and the type support that may be provided. Request for support from these agencies will be to IESDA through ~~City/County~~/Sangamon County ESDA.

<u>AGENCY</u>	<u>SUPPORT PROVIDED</u>
a. State ESDA	Provide administrative support, function as liaison headquarters between State and Federal Agencies.
b. State E.P.A.	Provide technical assistance at scene of incident, insure clean-up of environment.
c. State Dept. of Transportation	Responsible for promulgation regulations relating to transportation of hazardous materials, may provide assistance in the form of manpower, installation of barricades, etc.
d. Illinois Commerce Commission	Regulates railroad activities concerning transportation of hazardous materials, provide technical assistance of RR involved in HAZ-MAT incidents.
e. Illinois Dept. Agriculture	Provide technical assistance regarding Anhydrous Ammonia products, livestock, crops and food commodities that may be endangered.
f. Illinois Dept. of Mines & Minerals	Provide technical assistance regarding mine fires, petroleum products, oil pipelines, rescue and recovery apparatus and laboratories.
*g. Illinois Army National Guard	Provide vehicle support for transportation, security personnel, limited medical services.

- \*h. Illinois Air National Guard Provide fire suppression equipment for aircraft incidents, security personnel.
- i. Illinois Dept. of Public Health Provide additional health needs assistance.
- j. Illinois State Police Assistance to Local Law Enforcement Highway Traffic Control.
- k. Illinois Water Resources Provide assistance for water related incidents.
- l. Illinois Dept. of Nuclear Safety Assistance in matters of nuclear and radiation hazards.
- m. Illinois Dept. of Public Aid Provide relief to victims in need.
- n. Illinois Dept. of Corrections Provide manpower where appropriate.
- o. Illinois Dept. of Conservation Assist in water, forest and other related incidents.
- p. Springfield Dept. of Public Health Assist in matters of health.
- q. Sangamon County Highway Dept. Provide heavy equipment.
- r. Springfield Dept. of Public Works Provide light and heavy equipment.
- s. Springfield Recreation Dept.

OTHERS

- a. Civil Air Patrol
- b. Life Line Pilots

\*approved by Governor as required.

See Master Phone Listings

FEDERAL AGENCIES

Federal Agencies listed below will provide support, pursuant to Federal Law, dependent upon the type of incident. This list is not all inclusive, but will serve as a guide of available outside resources.

U.S. Department of Nuclear Safety	(202)	492-4184
U.S. Department of Energy	(301)	353-4403
U.S. Department of Transportation	(202)	426-1830
U.S. Coast Guard	(202)	267-0438
U.S. Environmental Protection Agency	(513)	569-7537
Bureau of Explosives	(202)	639-2222
Center of Disease Control	(404)	329-3311
Dept. of Defense Nuclear Accident Center	(505)	844-0011
National Response Center (USCG & EPA)	(800)	424-8802
U.S. Army Explosives Disposal	(618)	452-4242

COUNTY AGENCIES

- 1 The following listed County agencies will respond to incident emergencies, when requested:

County Highway Department	(217)	753-6865
Springfield Sanitary District	(217)	528-0491
Soil and Water Conservation	(217)	492-4015

VOLUNTARY ASSISTANCE  
(MANPOWER)

* STEVEN SIMS	75 NOTTINGHAM CHIATHAM, IL. <del>62629</del>	(H) 483-4426 (W) <del>544</del> -4518
+ * TERRY LOVING	56 COTTONWOOD CHIATHAM, IL. 62629	(H) 483-2861 (W) 483-2861
* ROGER SMITH	29 PARTRIDGE CHIATHAM, IL. 62629	(H) 483-2135 (W) 785-3253
* STEVE HARVEY	731 HACKBERRY CHIATHAM, IL. 62629	(H) 483-2209 (W) 525-5572
* TIM HENNESSY	711 CHESTNUT CHIATHAM, IL. 62629	(H) 483-5889 (W) 525-5308
* JACK HOSKINSON	5 KIRKWOOD CHIATHAM, IL. 62629	(H) 483-2346 (W) 483-4544
* RON HILL	737 WHITE OAK CHIATHAM, IL. 62629	(H) 483-3313 (W) 544-3431
* LOGAN PATTON	45 TEAL, CHIATHAM, IL. 62629	(H) 483-4244 (W) 483-4244
ROGER FURKIN	3/4 BENS DRIVE CHIATHAM, IL. 62629	(H) 483-4883 (W) 524-5326

\* INDIVIDUALS WITH CHAINSAWS

+ INDIVIDUALS WITH FOUR WHEEL DRIVES

# VILLAGE OF CHATHAM

116 East Mulberry Phone (217) 483-2451  
Chatham, Illinois 62629

VILLAGE PRESIDENT  
Earl Colburn

BOARDS  
Linda Burke  
Tim Claborn  
Linda Koster  
Tony Loring  
Ed Morgan  
Bill Wolfe

VILLAGE CLERK  
Rose Miller

VILLAGE ADMINISTRATOR  
Del McCord

SUPT. OF VILLAGE OPERATIONS  
Harold Bell

VILLAGE TREASURER  
Donald C. Fuern

May 14, 1990

ESDA  
617 E. Jefferson  
Springfield, Illinois 62701

Attention: Mr. Gene Dorfler

RE: WEATHER WATCH

Dear Mr. Dorfler:

In regard to the request of the Chatham Fire Chief and the Village of Chatham, Chatham ESDA Post 81 shall be responsible for WEATHER WATCH. Post 81 being Village Hall representing Chatham ESDA will be the agency returning the "10-8" (Weather Watch in service).

## SUPPORT PEOPLE

### NAME/TITLE

### WORK/HOME

### I.D.

POST 81

M-1

CHATHAM ESDA 1A 81A

CHATHAM ESDA 2B 81B

CHATHAM ESDA 3C 81C

CHATHAM ESDA 4D 81D

CHATHAM ESDA 5E 81E

CHATHAM ESDA 81F

483-2451

483-2455/483-5255

523-9041/483-4677

787-8560/483-4038

544-4518/483-4426

782-7540/483-4883

652-4244/483-4244

483-4684

529-7171/483-3756

" " 81G

VILLAGE HALL  
\*DEL McCORD, VILLAGE ADMINISTRATOR  
\*MONTE SIMS, ESDA COORDINATOR  
\*PAUL, DEPUTY COORDINATOR  
\*STEVEN SIMS, WEATHER WATCH  
ROGER TURKON, WEATHER WATCH  
\*LOGAN PATTON, WEATHER WATCH  
\*Jim Keith, weather Watch

\* "can be paged on Chatham Fires Lane"

Daveell Sims

Respectfully submitted,

Monte L. Sims  
ESDA Coordinator

MLS:is

WEATHER WATCH  
PLAN

In the event of a severe weather watch/warning the Chatham ESDA, Fire and Police Departments will be notified thru pager notice from Sangamon County. If a weather watch should occur during the work hours of a day the Chatham Police and Village Administrator shall initiate the primary weather watchers utilizing Village Employees if necessary. As additional designated people are available they shall report to Village Hall and shall receive directional information as to where they are needed.

In the event a severe warning does occur the Village Fan Out Communication shall go into affect in order to give people appropriate warning notice, and if directed by the ESDA outside early warning system shall be utilized.

A. FAN OUT COMMUNICATION LIST:

1. Ball Chatham Community Distict 5 483-2416  
500 SOUTH Pine
2. HI DIDDLE KIDDLE 483-3417  
49 Chuchhill Drive *A South Ind*
3. HI DIDDLE KIDDLE 483-3414  
205 East Chestnut 483-3413
4. KIDDE KORNER Day Care 483-5437  
216 West Mulberry
5. ST. JOHN LUTHERAN CHURCH Pre-School 483-2612  
North Main
6. SENIOR CITIZEN CENTER 483-2488  
109 East Mulberry  
*St. Johns Lutheran Church Pre school* 483-2612

B. TORNADO, SEVERE WEATHER, DAMAGE HAS OCCURED:

1. Notify CAP COM 911, They will notify Chatham Fire and Police, ESDA :
2. Direct essential Village Employees and support people to come to village hall for given instructions refer to Master Phone list:
3. Confirm that Chatham Police has cordone area effected and that a incident command post has been established:

4. Outside support groups such as County ESDA, State ESDA, State Fire Marshal, CILCO shall be directed to the Incident command post:
5. After area has been secured and emergency terminated contact County ESDA to assist Chatham ESDA in doing damage assesment:
6. Utilize Village Employees, and additional Man Power List if directed for clean up operation for a quick and accurate recovery:

\*\*\* SEVERE WEATHER PERSONNEL \*\*\*

	(work)	(home)	(unit ID)
Monte J. Sims	523-9041	483-4677	<del>ESDA 81A</del>
Paul w. Beadle	787-8560	483-4038	<del>ESDA 81B</del>
Del McCord	483-2451	483-5255	<del>ESDA 81C</del>
N Roger Furken	782-7540	483-4883	<del>ESDA 81D</del>
E Steven Sims	524-5326 544-4578	483-4426	<del>ESDA 81E</del>
w Logan Patton	650-4244	483-4244	<del>ESDA 81F</del>
S Jim Kieth	_____	483-4684	<del>ESDA 81G</del>
Danell Sims	529-7171	483-8756	<del>ESDA 81H</del>

In the event of a severe weather warning contact shelter personal for stand-by notice: ~~on hold~~

~~Personnel Community Center  
Del. or Dan. McCord (483-3751)  
Joyce Jongeward 483-3320~~

## WEATHER WATCHERS

1. After initial Weather watch has been reported by CAP-COM thru pager notice or via the telephone or radio.
  - A. All weather Watchers report to CHATHAM ESDA BASE POST 81 (VILLAGE HALL).
  - B. While at ESDA BASE POST 81 hand held radios shall be issued and a designated area for weather spotting will be given.
  - C. When the weather watchers are at their given location they shall 10-8 (in service) CHATHAM ESDA BASE in order so ESDA BASE can confirm proper communications.
  - D. The radio,s being issued are 2 channel radio,s with 5 watts of power and can be used within a 3 to 4 mile range, in the event communications is lost with CHATHAM ESDA BASE on channel 1 , and a real emergency has been spotted go to channel 2 SANGAMON COUNTY and report the emergency so proper notification can be made.
  - E. In the event SANGAMON COUNTY needs to be notified direct, because of lost communications with ESDA BASE initiate the call by making sure channel 2 is clear, then saying "SANGAMON COUNTY FROM CHATHAM ESDA 81 ", they will acknowledge then you state the emergency so proper notification can be made.



- F. If harsh weather has hit CHATHAM, do a damage assesment to the given area where you are located - for instance the watcher on the South West side of CHATHAM check the BUCKINGHAM SUBDIVISION, the North West side QUAIL MEADOW SUBDIVISION & SOUTH WIND, the North East Walnut Park & Willow Glen, South East Glenwood Park & Ivory Glen area.
- G. After the damage assesment has been done and reported to CHATHAM ESDA BASE report back to CHATHAM ESDA POST 81 (VILLAGE HALL) so additional resonsabilities be assigned if need be.

CHATHAM ESDA COORDINATOR

MASTER TELEPHONE LISTING

NOTE: Area Codes are all 217 unless otherwise indicated.

ACFX Rail Car Manufacturer	(314)	344-4500	
American Ambulance Service		523-3636	
American Insurance Association	(212)	433-4400	
American National Standards	(212)	354-3300	
American Red Cross		522-3357	
American Society of Mechanical Engineers	(212)	705-7722	
Ashland Chemical Company	(614)	276-6143	
Association of American Railroads	(202)	639-2232	
Bureau of Explosives (24 hours)	(202)	639-2222	
Center of Disease Control	(404)	329-3311	
CHEMTREC	(800)	424-9300	
Chlorine Institute	(212)	819-1677	
Central Illinois Light Company		753-5107	
Compressed Gas Association	(212)	345-1130	
Contact Ministries		753-3939	or
		753-0997	
Dept. of Defense Nuclear Accident Ctr.	(505)	264-4667	
Doctors Hospital of Springfield		529-7151	
DOW Chemical Corporation	(517)	774-7500	or
	(800)	441-7515	
GATX Rail Car Company	(312)	621-6200	
H.E.R.T.	(309)	828-1491	
Hulcher Corporation		965-3361	or
	(800)	637-5471	
Illinois Air National Guard (all numbers)		782-7860	
Illinois Army National Guard		782-7860	
Illinois Bell Telephone		544-9954	
Illinois Commerce Commission		782-7860	
Illinois Department of Agriculture		782-7860	
Illinois Depart. of Mines & Minerals		782-7860	
Illinois Depart. of Transportation		782-7860	
Illinois Environmental Protection Agency		782-7860	
Illinois Emergency Services Disaster Agency		782-7860	
Illinois Times Newspaper		753-2226	
Marine Environmental Protection	(314)	425-4655	or
	(314)	425-4657	
Memorial Medical Center		788-3000	
National Chemical Response Center	(800)	424-8802	
NATX Rail Car Manufacturer	(312)	648-4000	
O.H.O. Material Inc. (Haz.Waste Cleanup)	(800)	231-7031	
Pierce Waste Oil Service	(800)	602-8085	
Poison Control Center		753-3330	
Prairie Capitol Convention Center		788-8800	or
		788-8831	

Radio Stations:

WCVS	544-9855
WDBR	753-5431
WFMB	528-3033
WMAY	629-7077
WNNS	529-9099
WSSR	786-6516
WTAX	753-5431
WVEM	529-9500
Rychmans Emergency Reaction Team (REACT) (800)	325-1398
St. John's Hospital	544-6464
Salvation Army	525-2196
Sangamon County Highway Department	753-6865
Sangamon County Soil and Water Conservaton	492-4015
School District #186	525-3000 or 529-3997
Springfield City Water Light & Power	789-2121 or 786-4030
Springfield Dept. of Public Health	789-2182
Springfield Dept. of Public Streets	789-2246
Springfield Fire Department	788-8444
Springfield Mass Transit District	522-5531 or 522-3909
Springfield Police Department	788-8311
Springfield/Sangamon County ESDA	789-2280
Springfield Sanitary District	528-0491
State Journal Register	788-1300
Superior Ambulance Service	522-8831
Television Stations:	
WCIA Channel 3	525-2306
WAND Channel 17	528-5036
WICS Channel 20	753-5656
WRSP Channel 55	523-8855
Texas Tech. University Pesticide Holtine(800)	858-7379
U.S. Coast Guard/DOT Nat. Response Ctr. (800)	424-8802
U.S. Department of Transportation (202)	526-1830

FIRE DEPARTMENT MEMBERS

RADIO CALL #,S			PHONE#,S	
			HOME	WORK
4E	Jay Riseman	301 E. Mulberry	(M.D.)	483-4508 782-5880
6	Jerry Hughes	RR#1 Box 304	(EMTA)	483-2688/483-3312
7	Ardie Baulos	213 West Chestnut	(EMTA)	483-5127/483-2451
8	Mike Branham	506 West Chestnut		483-5125/787-3200
9	Bob Skaggs	207 S. State		483-2041/483-3707
10	Harold Bell	840 Oxford DR.		483-3380/483-2451
11	Don Butler	2 Winston RD.	(EMTA)	483-2265/783-6341
13	Steve Sullivan	204 N. Church		483-4376/483-2812
14	John Holm	22 Chatham Villa		483-3679/753-7291
15	Mike Gorsage	75 Chuchhill		483-4524/483-2451
16	Steve Hoff	35 Bonniebrook		483-3250/483-2406
17	Jeff Speaks	209 West Spruce		483-3848
18	Carl Szabo	5 County Rd.		483-3680
19	Randy Cooke	414 E. Locust #20		483-4207
20	Mark Gleason	18 Winston	(EMTA)	483-3996
21	Shane Hill	14 Circle Dr.	PG744-6115	483-2029/483-2451
22	Jim Gerberding	24 Southgate	(EMTA)	483-4010/483-3012
23	George Perkins	301 Carrie Lane	(EMTA)	483-5671/237-4311
24	Bill Rose	40 Southgate		483-4246/483-2113
5	Rod Wood	-----		483-4129
26	Terry Moore	RR#1 Box 178	(EMTP)	483-5502/785-1183
27	Doug Hawk	41 Downing	(EMTA)	483-2684/785-9352
28	Meredith Branham	218 E. Spruce	(EMTA)	483-4947/ 7873200
29	Bruce Osborne	301 W. Mulberry	(EMTA)	483-4469
30	Guy Easterwood	RR#1	(EMTI)	483-5046/788-3030
31	Terry Brown	213 W. Locust		483-5985
32	John Bucci	829 Deerfield	(EMTA)	483-2141/782-2928
33	Kraig Peecher	80 Teal Dr.		483-2380/529-7171
34	Dave Freeman	616 W. Spruce		483-3776/523-4565
35	Joe Sommerson	-----		483-4165/
36	Rick Cutler	15 Southgate	(EMTI)	483-5832/
38	Troy Bell	414 E. Locust	PG744-6109	483-4207/483-2451
		Riseman, L.	(R.N.)	
		Henkleman, J.	(EMTA)	

DEFINITIOND

- (M.D.) Medical Doctor 1
- (EMTA) Emergency medical technician Ambulance 10
- (EMTI) Emergency Medical Technician Intermediate 2
- (EMTP) Emergency Medical Technician Paramedic 1

SHELTER PHONE LIST

Del McCord	CHATHAM COMMUNITY CENTER W. MULBERRY STREET CHATHAM, IL 62629	483-2455
REV. GLEN STROCHSCHEIN	ST. JOHNS LUTHERAN RT. 4 N. MAIN BOX 377 CHATHAM, IL 62629	483-2612 483-4617
BILL BIRD BILL BIRD RANDY WEISS	CHATHAM ELEM. 525 S. COLLEGE CHATHAM, IL 62629	483-2411 438-3620 483-3661
MIKE COLLINS	GLENWOOD SR. HIGH RR#1 CHATHAM, IL 62629	483-2424 483-3963
RICK TAYLOR	GLENWOOD JR. HIGH RR#1 CHATHAM, IL 62629	483-2481 483-4304
JIM JACKSON	VALI. ELEMETARY RR#1 CHATHAM, IL 62629	483-2414 793-1797
RICK WENNEBORG	SO. MAIN ROAD 80. MAIN ROAD CHATHAM, IL 62629	483-3987 483-3693
DONALD MAYBERRY NICK NONES	BAPTIST CHURCH 1500 EAST WALNUT CHATHAM, IL 62629	483-2471 483-4761

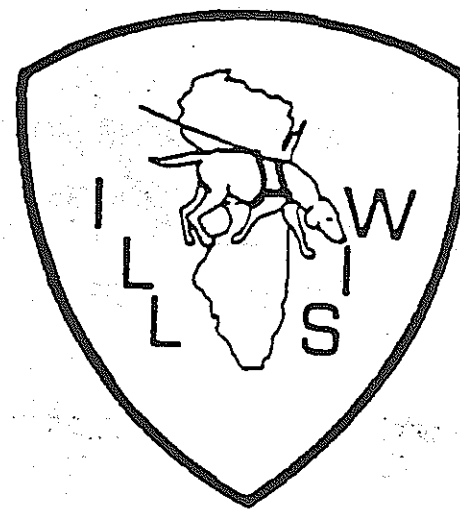




Illinois-Wisconsin is a member organization of National Search & Rescue (NASAR) and is on call to Scott Air Force Base for search. Our unit is also under the Air Rescue Wing at Billy Mitchell Field in Milwaukee, Wis.



Member



DOGS SERVING HUMANITY

# ILLINOIS WISCONSIN SEARCH & RESCUE DOGS

P.O. BOX 894  
WOODSTOCK, ILLINOIS 60098

SEARCH AND RESCUE  
MAN-TRAILING DOGS  
FIELD SEARCH  
UNDERWATER BODY DETECTION  
GUNPOWDER DISCOVERY  
CADAVER LOCATION

24 HOUR TELEPHONES  
McHENRY COUNTY SHERIFF'S POLICE  
(815) 338-2145

**SPRINGFIELD/SANGAMON COUNTY ESDA RESCUE SQUAD**

617 E. JEFFERSON STREET      SPRINGFIELD, ILLINOIS 62701-1026

SPFLD. POLICE - 788-8317

SANG. CO. SHERIFF - 753-6666

RESCUE SQUAD (POST 3) - 789-2358

<u>RS#</u>	<u>NAME</u>	<u>RANK</u>	<u>H-PHONE</u>	<u>W-PHONE</u>	<u>PAGER NO.</u>
5	Bill Russell Jr.	Chief	787-1070	525-8820	
6	Terry Nydegger	Asst. Chief	787-1479	787-0282	
7	Fred Peters	Dep. Chief	364-5995	-	
8	Mike Bishop	Dep. Chief	546-5620	753-6886	
9	Tony Snedigar	Dep. Chief	528-1856	-	788-1169VO
50	Bill Russell Sr.	Staff Advisor	496-3137	544-3431	

**SQUAD #1**

10	John Archer	CAPTAIN	787-0358	523-9041	
11	Roger Smith	Sr. Lt.	528-5607	-	
12	Pete Correll	Lt.	546-4909	626-1141	
13	Robin Smith	Lt.	522-8657	744-3000	788-6306DTL
15	Ron Sandhaas	Lt.	527-1871	-	
16		Lt.	-	-	
17		Lt.	-	-	
18		Lt.	-	-	

**SQUAD #2**

20	Craig Banqert	Captain/FTD	523-1993	-	
21	Greg Vespa	Sr. Lt./Sec.	629-9433	-	
	Jerry Krumme	Lt.	364-5466	-	
	Mark Voorhees	Lt.	546-7239	787-8050	
25		Lt.	-	-	
26		Lt.	-	-	
27		Lt.	-	-	

**SQUAD #3**

30	Greg Robinson	Captain	744-9527	544-3431	788-2070-VO.
31	Ed Sauer	Sr. Lt./S.O.	523-0598	-	
32		Lt.	-	-	
33		Lt.	-	-	
34	Jerry Reynolds	Lt.	753-1882	-	
35		Lt.	-	-	
36	Bruce Britt	Lt.	566-3629	-	
60	Paul Beyer	Tr. Advisor	787-8632	-	

**PROBATIONARY**

41		Prob.	-	-	
42		Prob.	-	-	
43		Prob.	-	-	
44	Cathy DeJong	Prob.	787-0356	-	
45		Prob.	-	-	
46		Prob.	-	-	

	Office		789-2280	789-2281	
	Gene Doerfler	Director	546-3525	789-2279	744-6022-VO.
#2	Rex A. Coble	Dep. Director	624-4111	789-2231	744-6011-VO.
#3	Bill Russell, Jr.	Admin. Aide	787-1070	789-2280	744-6012-VO.
#4	Gina Bishop	Admin. Sec.	546-5620	789-2280	

America Ambulance - 523-3636/3637      Superior Ambulance - 522-9223



